



ANALOG TO DIGITAL **CONVERTER MANUAL ///**



INTRODUCTION ///

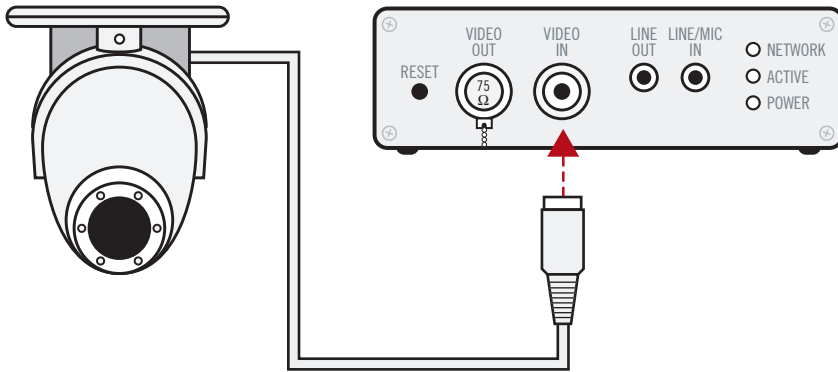
The **XAD650 Analog to Digital Converter** is a device that allows legacy analog cameras to be used with your system. You will need one of these units for each analog camera that you wish to use. These cameras will be able to be viewed just like any other camera in the system. They can also be used to generate alerts based on motion in the camera field of view, even if the camera does not support motion detection. You can not control the Pan/Tilt position of the camera through the system, even if the camera supports this feature.

INSTALLATION ///

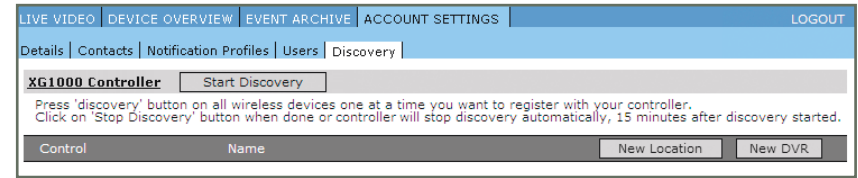
1. Connect the Analog Video Cable from the camera to the **“Video In”** connector of the A/D Converter. If your camera uses an RCA-type plug for the video connection, you will need an RCA to BNC type adapter to make this connection.

THE 75 OHM RESISTOR CAP MUST BE IN PLACE IF YOU'RE NOT USING THE VIDEO OUT CONNECTOR.

If you are using a DVR or other analog device that you want to continue using, you can remove the 75 Ohm resistor cap and connect this device to the **“Video Out”** connector of the Converter.



2. Connect an Ethernet cable from the **“Ethernet”** port on the A/D Converter to a port on your system router. This connection needs to be on the **SAME ROUTER** as the XG1000 controller.
3. Connect the power unit to the **“Power”** jack on the A/D Converter and plug the power unit into a wall socket. The **“Power”** and **“Network”** lights should be illuminated.
4. Log in to your remote account and go to the **Account Settings/Discovery** page. Press the **‘START DISCOVERY’** button.



5. After the system discovers and registers the A/D Converter, press the **‘STOP DISCOVERY’** button.
6. Go to the **Device Overview** page and confirm that the new camera is available. You can now view live video by selecting **‘LIVE VIDEO’** and clicking on the Snapshot.

